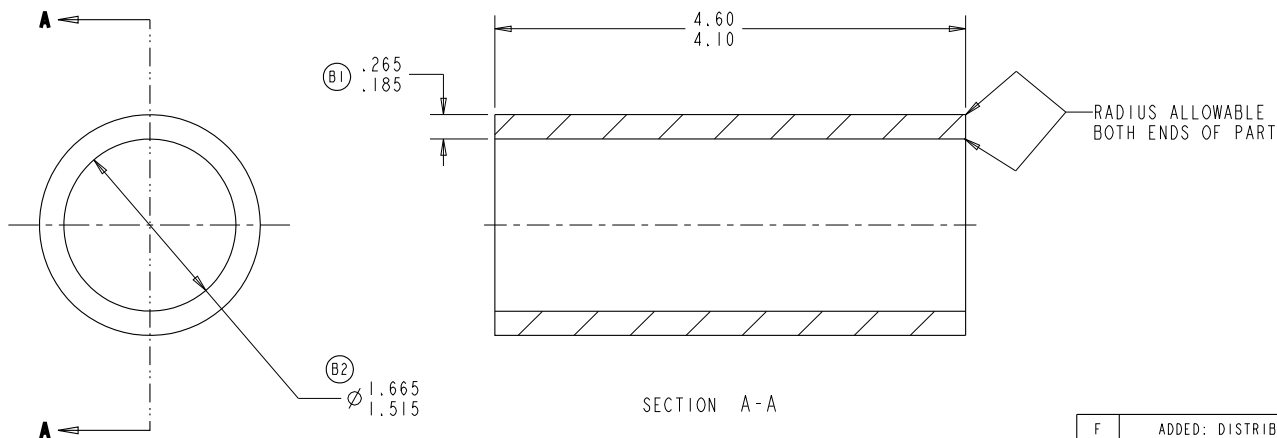


ITEM	PART NO.	DESCRIPTION	REV.
------	----------	-------------	------



NOTES:

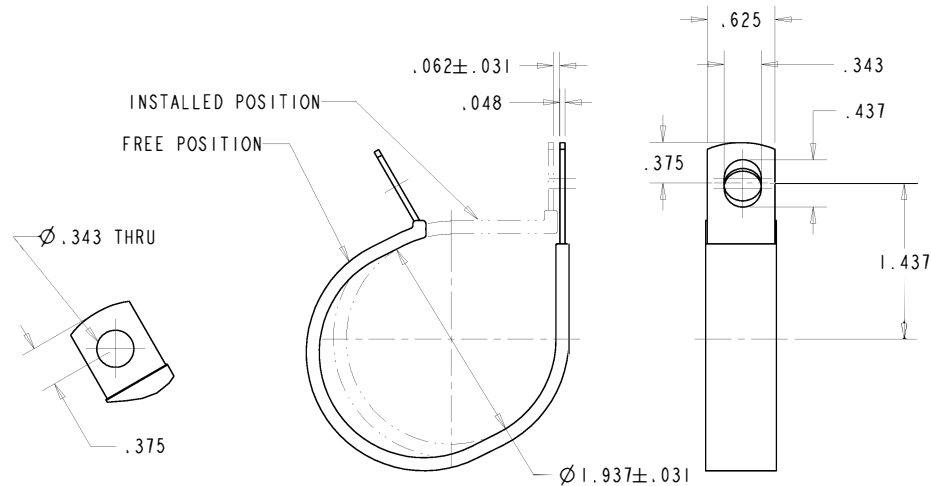
1. MATERIAL: NITRILE-SPONGE (C)
2. ALL MATERIAL RECEIVED MUST BE SLIP-COATED ON THE ID WITH E60-350 WACKER SILICONE EMULSION.
3. NO LOOSE HANGING FLASH OR BURRS

TI AUTOMOTIVE USE ONLY
DISTRIBUTION CODE

CC			
----	--	--	--

<p>THIS DRAWING IS PROPERTY OF TI Automotive. TI Automotive CLAIMS PROPRIETARY RIGHTS IN THE SUBJECT MATTER SHOWN AND DESCRIBED ON THIS DRAWING AND RETAINS ALL INTELLECTUAL PROPERTY RIGHTS. THE DRAWING IS PROVIDED FOR REFERENCE PURPOSES ONLY AND ON THE EXPRESS CONDITION THAT IT WILL BE HELD IN CONFIDENCE. THIS DRAWING SHALL NOT BE DISCLOSED TO OTHERS OR USED FOR THE PURPOSE OF MANUFACTURE BY OR PURCHASEMENT FROM OTHERS OF THE ARTICAL OR PART SHOWN WITHOUT TI Automotive's EXPRESS WRITTEN CONSENT. NO LICENSE OR OTHER RIGHT IS GIVEN OR IMPLIED BY THE PROVISION OF THIS DRAWING TO RECIPIENT. Copyright, TI Automotive 2007, all rights reserved.</p>	
<p>CRITICAL CHARACTERISTIC MAJOR CHARACTERISTIC INSPECTION CHARACTERISTIC</p>	<p>UNLESS OTHERWISE SPECIFIED DIMENSIONS ARE IN INCHES 2 PL DEC. ± 0.01 3 PL DEC. ± 0.005 ANGLES $\pm 1.0^\circ$ INTERPRET DIM AND TOL PER ASME Y14.5M - 1994</p>
<p>PART MUST BE CLEAN AND FREE OF OIL AND FOREIGN MATTER</p>	

F	ADDED: DISTRIBUTION CODE	SNB	SNB	03/17/08	100807
E	WAS: ALL MATERIAL RECEIVED MUST BE DUSTED WITH A PULVERIZED TALC OR MICA DUST	SNB	CFH	04/19/07	100699
D	ADDED: NOTE #3	SNB	CFH	03/27/06	100604
C	WAS: NITRILE-PVC SPONGE 43	SNB	CFH	05/25/04	100346
B2	WAS: $\varnothing 1.65/1.53$	SNB	JRR	07/24/02	100083
B1	WAS: .25/.20	SNB	JRR	12/08/98	R28282
A	REDRAWN ON PRO NO CHANGE	SNB	SNB	05/23/00	39226
	REL. FOR PROD.	JRR			
REV.	CHANGE	CH. BY	CH. BY	DATE	NO.
McCLAIN	12/07/98	CC	BY		
5000	TD122-0118				
SCALE:	PROF. SCALE				
1.0 = 1	122-3316				
MATERIAL	SEE NOTES				
REL. FOR QUOTE					
BY:					
DATE:					
		<p>TI Group Automotive Systems</p>		<p>AFTERMARKET CARGO</p>	
		<p>Core, Michigan, U.S.A.</p>		<p>PART NAME:</p>	
		<p>SLEEVE - OUTER PUMP</p>		<p>PART NO.</p>	
		<p>122-3316</p>		<p>SHEET:</p>	
				<p>1 OF 1</p>	



NOTES:

1. MATERIAL: CR STEEL CO
2. FINISH: ZINC PLATED
3. CUSHION: BLACK VINYL 1/32" THICK

TI AUTOMOTIVE USE ONLY
DISTRIBUTION CODE

(A)

CC

THIS DRAWING IS PROPERTY OF TI Automotive. TI Automotive CLAIMS PROPRIETARY RIGHTS IN THE SUBJECT MATTER SHOWN AND DESCRIBED ON THIS DRAWING AND RETAINS ALL INTELLECTUAL PROPERTY RIGHTS. THE DRAWING IS PROVIDED FOR REFERENCE PURPOSES ONLY AND ON THE EXPRESS CONDITION THAT IT WILL BE HELD IN CONFIDENCE. THIS DRAWING SHALL NOT BE DISCLOSED TO OTHERS OR USED FOR THE PURPOSE OF MANUFACTURE BY OR PROCUREMENT FROM OTHERS OF THE ARTICAL OR PART SHOWN WITHOUT TI Automotive's EXPRESS WRITTEN CONSENT. NO LICENSE OR OTHER RIGHT IS GIVEN OR IMPLIED BY THE PROVISION OF THIS DRAWING TO RECIPIENT. Copyright, TI Automotive 2007, all rights reserved.

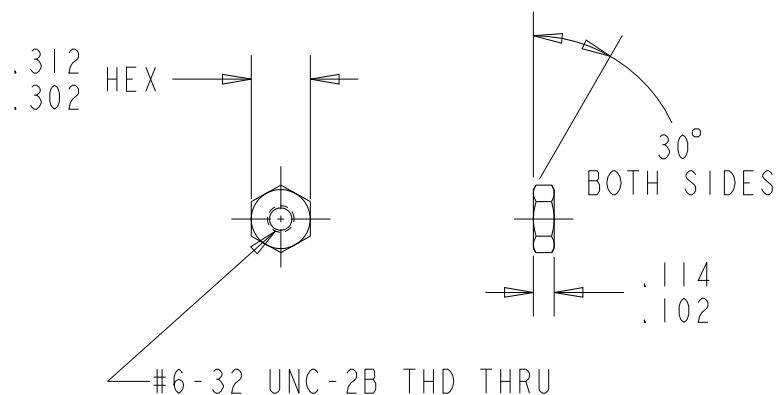
◇ CRITICAL CHARACTERISTIC
 ▣ MAJOR CHARACTERISTIC
 ▢ INSPECTION CHARACTERISTIC

PART MUST BE CLEAN AND FREE
OF OIL AND FOREIGN MATTER

UNLESS OTHERWISE SPECIFIED
DIMENSIONS ARE IN INCHES
 2 PL DEC. ± 0.01
 3 PL DEC. ± 0.005
 ANGLES ± 1.0°
 INTERPRET DIM AND TOL PER
ASME Y14.5M - 1994

A	ADDED: DISTRIBUTION CODE	SNB	SNB	03/17/08	100807
	REL. FOR PROD.	SNB	CFH	10/04/99	R29848
REV.	CHANGE	CR. BY	CR. BY	DATE	NO.
SNB	10/04/99				
5000	EXP. NO.	TI Group Automotive Systems			
SCALE:	PROT. SCALE:	Core, Michigan, U.S.A.			
1.0 = 1	195-63	CLAMP / PUMP			
REL. FOR PROD.	BY:	DATE:	195-63		
			1 OF 1		

ITEM	PART NO.	DESCRIPTION	NO. REQ'D
------	----------	-------------	--------------



NOTES:

1. MATERIAL: AISI 302 OR 304
STAINLESS STEEL
2. NO BURRS OR SHARP EDGES ALLOWED

(B)

TI AUTOMOTIVE USE ONLY
DISTRIBUTION CODEAFT.
CARB

-TI Automotive CONFIDENTIAL AND PROPRIETARY -
THIS DRAWING IS PROPERTY OF TI Automotive. TI Automotive CLAIMS PROPRIETARY RIGHTS IN THE SUBJECT MATTER SHOWN AND DESCRIBED ON THIS DRAWING AND RETAINS ALL INTELLECTUAL PROPERTY RIGHTS. THE DRAWING IS PROVIDED FOR REFERENCE PURPOSES ONLY AND ON THE EXPRESS CONDITION THAT IT WILL BE HELD IN CONFIDENCE. THIS DRAWING SHALL NOT BE DISCLOSED TO OTHERS OR USED FOR THE PURPOSE OF MANUFACTURE BY OR PROCUREMENT FROM OTHERS OF THE ARTICLE OR PART SHOWN WITHOUT TI Automotive's EXPRESS WRITTEN CONSENT. NO LICENSE OR OTHER RIGHT IS GIVEN OR IMPLIED BY THE PROVISION OF THIS DRAWING TO RECIPIENT. Copyright, TI Automotive 2007, all rights reserved.

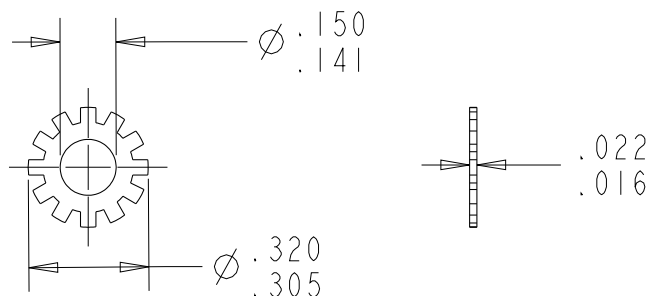
◇ CRITICAL CHARACTERISTIC
● MAJOR CHARACTERISTIC
☑ INSPECTION CHARACTERISTIC

PART MUST BE CLEAN AND FREE
OF OIL AND FOREIGN MATTER

UNLESS OTHERWISE SPECIFIED
DIMENSIONS ARE IN INCHES
2 PL DEC. ± 0.01
3 PL DEC. ± 0.005
ANGLES $\pm 1.0^\circ$
INTERPRET DIM AND TOL PER
ASME Y14.5M - 1994

B	ADDED DISTRIBUTION CODE	SNB	TLH	11/16/07	100770
A	REDRAWN ON PRO NO CHANGE	SNB	SNB	08/01/00	39649
	REL. FOR PROD.	CFH		04/01/99	R28848
REV.	CHANGE	CH. BY	CK. BY	DATE	NO.
DRAWN BY: McCLAIN	DATE: 03/30/99	CK. BY: --	TI Group <i>Automotive Systems</i> AFTERMARKET CARO Caro, Michigan, U.S.A.		
PRODUCT: INLINE	EXP. NO.				
SCALE: 1.0 = 1	PRO/E MODEL: 134-103				
MATERIAL:	SEE NOTES		PART NAME: NUT - HEX #6-32		
REL. FOR QUOTE BY: DATE:			PART NO. 134-103	SHEET: 1 OF 1	

136-276



NOTES:

1. EXTERNAL TOOTH LOCK WASHER
TYPE A FOR #6 STUD
2. MATERIAL: STAINLESS STEEL

(B)

TI AUTOMOTIVE USE ONLY
DISTRIBUTION CODE

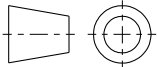
AFT.
CARB

-TI Automotive CONFIDENTIAL AND PROPRIETARY -
THIS DRAWING IS PROPERTY OF TI Automotive. TI Automotive CLAIMS PROPRIETARY RIGHTS IN THE SUBJECT MATTER SHOWN AND DESCRIBED ON THIS DRAWING AND RETAINS ALL INTELLECTUAL PROPERTY RIGHTS. THE DRAWING IS PROVIDED FOR REFERENCE PURPOSES ONLY AND ON THE EXPRESS CONDITION THAT IT WILL BE HELD IN CONFIDENCE. THIS DRAWING SHALL NOT BE DISCLOSED TO OTHERS OR USED FOR THE PURPOSE OF MANUFACTURE BY OR PROCUREMENT FROM OTHERS OF THE ARTICLE OR PART SHOWN WITHOUT TI Automotive's EXPRESS WRITTEN CONSENT. NO LICENSE OR OTHER RIGHT IS GIVEN OR IMPLIED BY THE PROVISION OF THIS DRAWING TO RECIPIENT. Copyright, TI Automotive 2007, all rights reserved.

◇ CRITICAL CHARACTERISTIC
● MAJOR CHARACTERISTIC
☑ INSPECTION CHARACTERISTIC

PART MUST BE CLEAN AND FREE
OF OIL AND FOREIGN MATTER

UNLESS OTHERWISE SPECIFIED
DIMENSIONS ARE IN INCHES
2 PL DEC. ± 0.01
3 PL DEC. ± 0.005
ANGLES $\pm 1.0^\circ$
INTERPRET DIM AND TOL PER
ASME Y14.5M - 1994

B	ADDED DISTRIBUTION CODE		SNB	TLH	11/16/07	100770
A	REDRAWN ON PRO NO CHANGE		SNB	SNB	08/01/00	39649
	REL. FOR PROD.		CFH		06/03/99	R29173
REV.	CHANGE		CH. BY	CK. BY	DATE	NO.
DRAWN BY: McCLAIN	DATE: 06/03/99	CK. BY: --	<div>TI Group[®]</div> <div>AFTERMARKET Automotive Systems CARO</div>			
PRODUCT: 5000	EXP. NO.					
SCALE: 2.0 = 1	PRO/E MODEL: 136-276		Caro, Michigan, U.S.A.			
MATERIAL: SEE NOTES			PART NAME: WASHER - #6 LOCK			
REL. FOR QUOTE BY: DATE:			PART NO. 136-276			SHEET 1 OF 1